



Advanced Coating Technologies

MOTELS

HOUSTON

8716 Long Point, Suite 310, Houston, TX 77055 • Phone: (713) 365-0444 • 1-888-252-3434

DALLAS

6518 Mapleshade Lane, Dallas, TX 75252 • Phones (972) 815-8789 (469) 441-0609

www.xpeditecoatings.com



Xpedite Coatings provides coating systems designed to meet specific needs of clients in a variety of industries and commercial establishments

We approach our services with our clients' needs as the starting point, and then we look for the solution that will best meet those needs both technically and economically.

We have proven systems for the hospitality and-food process industries, commercial kitchens, restaurants, dairy processing plants, clean rooms, auto-repair shops, secondary containment applications, water proofing, corrosion protection, anti-slip floors for heavy traffic areas, concrete pavement repair, warehouses, and many others.

We are fully committed to providing outstanding service to our customers.

We look forward to working with you.



Clean floors
No stains
Easy to clean
Anti-slip protection
Easy removal of chewing gum





Xpedite Anti-Slip

This coating is the result of many years working with hotels and motels. It has been specifically designed to withstand heavy use and years of service. Most floors in the workplace offer suitable slip resistance when dry and clean, but the same floor can become extremely dangerous when wet or dirty. Motel owners are well aware of the potential dangers and liability costs that their floors may present. *Xpedite Anti-Slip* offers long-lasting anti-slip protection for your floors, above all when it rains. Floors are easy to clean, and getting rid of chewing gum is a breeze. Warranty: 10 years



SCOPE OF WORK:

DAY 1

- Measurement of moisture content of concrete slabs on first floor.
- Surface preparation, including diamond grinding and repair of cracks and holes.
- Application of seamless base coat with Uropoxy with high pigment loading for excellent substrate hide, available in 16 standard colors.
- Light broadcasting of chips made of hard-wearing decorative color stable flakes. We add quartz chips to enhance anti-slip properties.

DAY 2

- Application of polyurea topcoat to provide a hard protective and impact resistant surface.

We can finish our Xpedite Anti-Slip applications in one day using a special fast-curing polyurea. Please contact us for details.

Maintenance:

Clean with normal detergents and water.



We bring peace of mind to motel and hotel owners.

HOUSTON

8716 Long Point, Suite 310, Houston, TX 77055 • Phone: (713) 365-0444

DALLAS

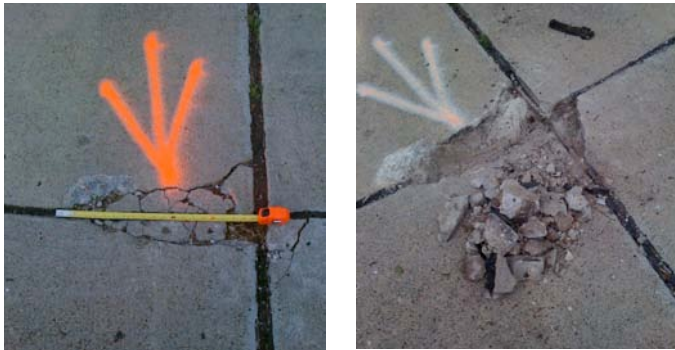
6518 Mapleshade Lane, Dallas, TX 75252 • PHONES (972) 815-8789 (469) 441-0609

www.xpeditecoatings.com



PSC SYSTEM

AN EFFECTIVE WAY TO
REPAIR POTHoles AND
SPALLED CONCRETE



Xpedite PSC is a three-part specially formulated, 100% solids, that is applied to a trowel finish, level with the pavement.

Physical properties:

- Compressive Strength ASTM C-579
8,000 - 10,000 psi
- Tensile Strength ASTM C-307
4,000 - 5,000 psi
- Cure Time 72°F - 75°F: 8 -12 hours
- Color: gray
- Return to traffic: 8 hours

TOP: Once spalled concrete is chiseled, the cavity to be filled becomes apparent. It is thoroughly cleaned and primed and then filled with our specially formulated product. Its light gray color blends quite well with the concrete pavement. Our PSC System provides a strong bond with existing concrete.

BOTTOM LEFT: Access ramps are subject to stresses that spall the concrete. They must be repaired before damage becomes too costly.

