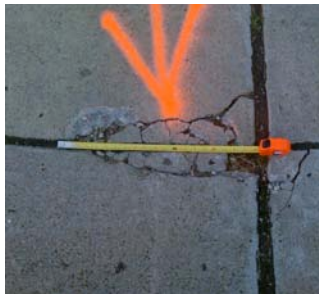




www.xpeditecoatings.com

PSC Epoxy Concrete

AN EFFECTIVE WAY TO REPAIR POTHOLES AND SPALLED CONCRETE



Xpedite PSC is a three-part specially formulated, 100% solid epoxy concrete that is applied to a trowel finish, level with the pavement.

Physical properties:

- Compressive Strength ASTM C-579
8,000 - 10,000 psi
- Tensile Strength ASTM C-307
4,000 - 5,000 psi
- Cure Time 72°F - 75°F: 8 -12 hours
- Color: gray
- Return to traffic: 8 hours

TOP: Once spalled concrete is chiseled, the cavity to be filled becomes apparent. It is thoroughly cleaned and primed and then filled with our specially formulated product. Its light gray color blends quite well with the concrete pavement. Xpedite PSC System provides a strong bond with existing concrete.

BOTTOM LEFT: Access ramps are subject to stresses that spall the concrete. They must be repaired before damage becomes too costly.

